



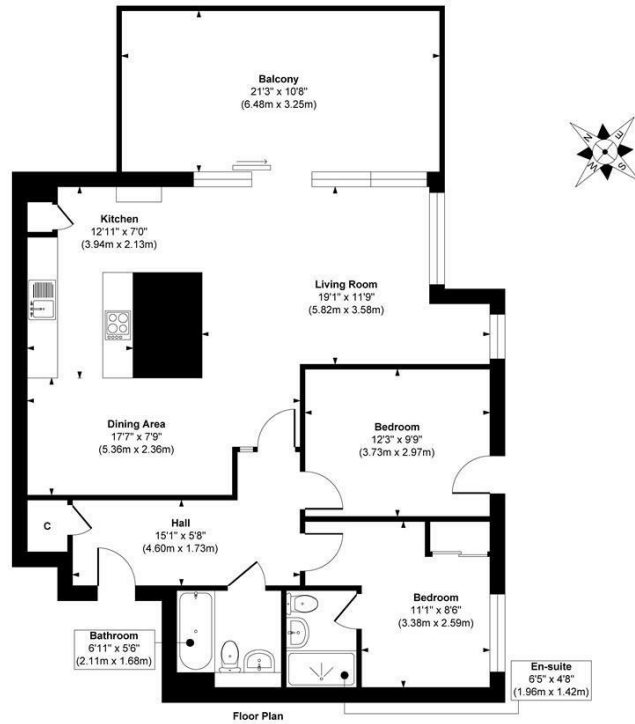
35 ADMIRAL COURT BOWMAN LANE
LEEDS, LS10 1HP

£400,000
LEASEHOLD

Experience the pinnacle of luxury in this stunning penthouse apartment, perfectly perched along the riverside in the heart of Leeds. Indulge in breathtaking views, sophisticated design, and an unparalleled lifestyle in this exquisite urban retreat.

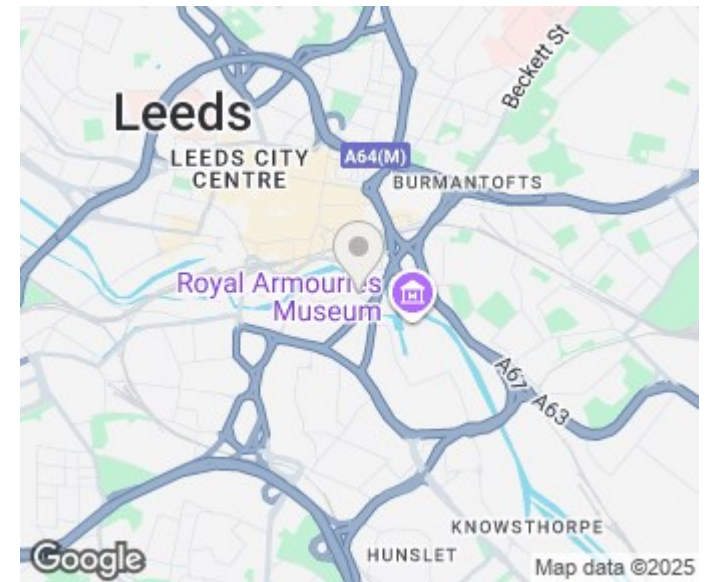
MONROE

SELLERS OF THE FINEST HOMES



Approx. Gross Internal Floor Area 912 sq. ft / 84.72 sq. m

Illustration for identification purposes only, measurements are approximate, not to scale.
Copyright © Zenith Creations.



Energy Efficiency Rating		
	Current	Potential
Very energy efficient - lower running costs		
(92 plus) A		
(81-91) B	81	83
(69-80) C		
(55-68) D		
(39-54) E		
(21-38) F		
(1-20) G		
Not energy efficient - higher running costs		
England & Wales	EU Directive 2002/91/EC	

Agents Note: Whilst every care has been taken to prepare these particulars, they are for guidance purposes only. All measurements are approximate and are for general guidance purposes only and whilst every care has been taken to ensure their accuracy, they should not be relied upon and potential buyers/tenants are advised to recheck the measurements

Leeds City Centre
Leeds City Centre
Whitehall Road Leeds
LS12 1FJ

0113 350 0866
citycentre@monroeestateagents.com

MONROE

SELLERS OF THE FINEST HOMES